

**BSE TECHNOLOGY (MALAYSIA) SDN. BHD.**

**BSE TECHNOLOGY (VIETNAM) CO.LTD.**

**Total Solution for Industrial Automation**



# **1 COMPANY OVERVIEW**

# ABOUT THE COMPANY

## BSE OVERVIEW

- Incorporated in 2004
- We do Turnkey Project, **Automation**, Clean Room, M & E Work, Water Treatment, RODI , IBMS Programming and **engineering work**.
- Providing reputable brands to Manufacturing, Building, University & etc.
- Cost effective & technically advanced solutions in the automated & process system
- Provides complete application coverage with unparalleled user flexibility
- Fast growth, committed & dedicated





# **ORGANIZATION STRUCTURE**



# BSE TECHNOLOGY GROUP



LIFTER & LINK  
CONVEYOR



WORK CELL  
(MANUAL ASSEMBLY)



LINK  
CONVEYOR



AUTO  
FASTENING  
MACHINE



AUTO  
LABELING  
MACHINE

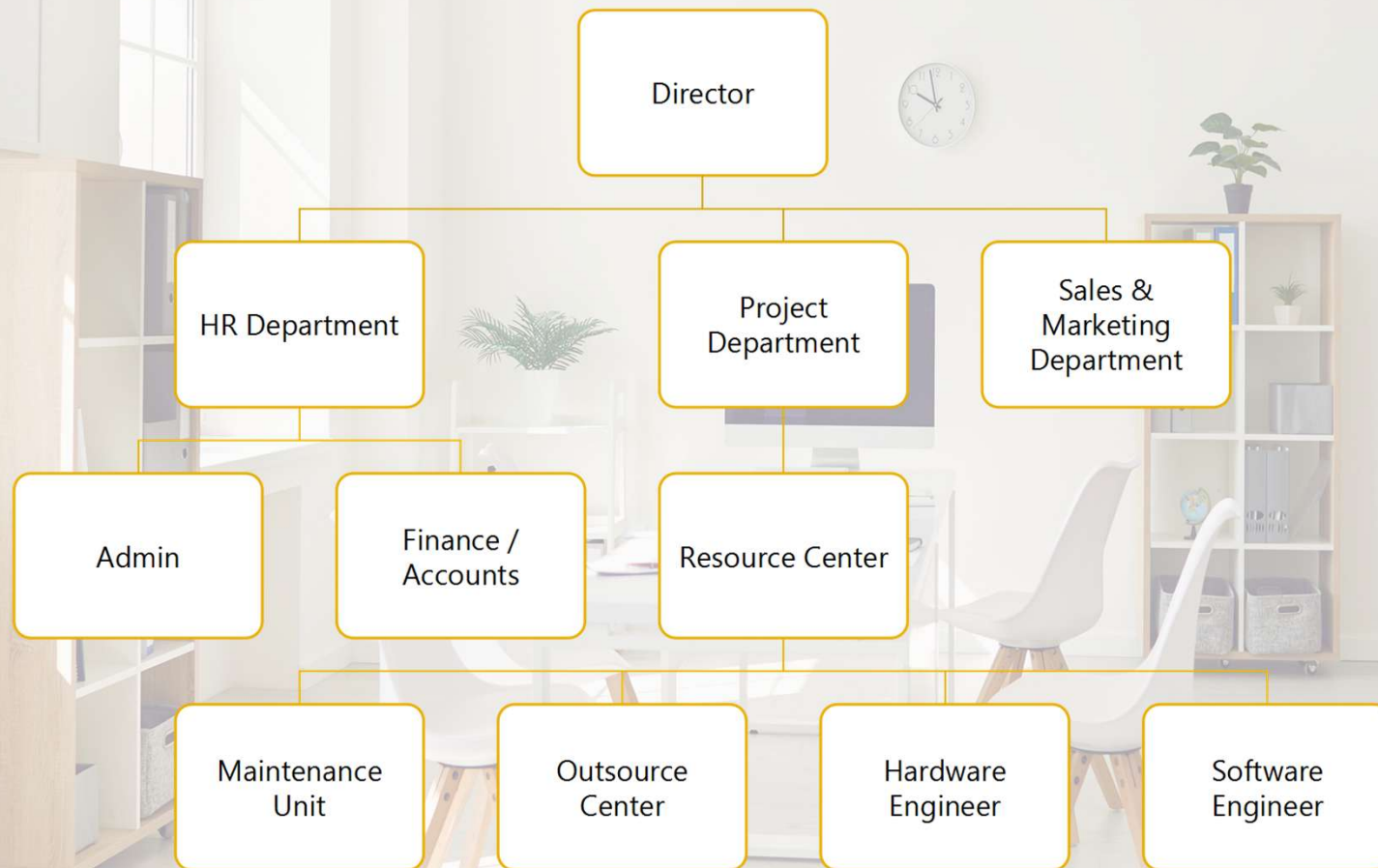


AUTO  
DISPENSING  
MACHINE

***BSE TECHNOLOGY  
(M) SDN. BHD.  
MALAYSIA***



**BSE TECHNOLOGY  
(VIETNAM) CO. LTD.  
VIETNAM**





# **OUR VALUE**



**We are innovative, challenging, quality, evolving and above all in long-term relationships, we believe in Trust. We believe it is essential to find that special point of difference that truly makes all the difference.**

## **INNOVATIVE**

Innovative lead us to positive change, to make someone or something better.

## **CHALLENGING**

Because we challenge ourselves, our suppliers and clients, we are able to find the most appropriate solution.

## **QUALITY**

Our agility ensures we deliver whatever the circumstances.

## **EVOLVING**

Change, change and more change, we're not afraid of it. Evolution is a natural process and we embrace it.

## **TRUST**

Trust is the foundation of all good relationships and we wish to develop long-term relationships.





4

# REGISTRATION CERTIFICATES



ASAL  
VC015386

**JADUAL KETIGA**  
[enbab 5(2) subrule 5(2)]  
**AKTA INDUSTRI PERKHIDMATAN AIR 2006**  
WATER SERVICES INDUSTRY ACT 2006

KAEDAH-KAEDAH INDUSTRI PERKHIDMATAN AIR (PERMIT) 2007  
WATER SERVICES INDUSTRY (PERMIT) RULES 2007

PERMIT IPA JENIS A/B/C/D/E\*  
IPA TYPE A/B/C/D/E\* PERMIT

No. Permit:  
Permit Number: SPAN/EKS/(PT)/800-2D/1/15/242

Nama pemegang permit:  
Name of permit holder: BSE TECHNOLOGY (M) SDN. BHD.

Alamat pemegang permit:  
Address of permit holder: NO. 33 & 33A, JALAN PUSAT PERNIAGAAN RAJA  
UDA 4, PUSAT PERNIAGAAN RAJA UDA, 12300  
BUTTERWORTH, PULAU PINANG

Tujuan permit:  
Purpose of permit: PERMIT IPA JENIS D (BEKALAN AIR)

Negeri atau negeri-negeri di mana kerja-kerja boleh diusahakan:  
State or states in which the works may be carried out:  
PULAU PINANG

Permit sah dari:  
Permit is valid from: 23 JANUARI 2022

sehingga  
to: 22 JANUARI 2023

Permit tertakluk kepada terma dan syarat yang dilampirkan.  
Permit subject to terms and conditions as attached.

Fi Permit:  
Permit fee: RM 900.00



Suruhanjaya Perkhidmatan Air Negara  
Resit No.: PO035715  
Tarikh pengeluaran/pembaharuan:  
Date of issue/renewal: 14 JANUARI 2022

**SPAN**

Suruhanjaya Perkhidmatan Air  
Negara



**PERAKUAN PENDAFTARAN**

Adalah dengan ini diperakui bahawa kontraktor yang dinyatakan di bawah ini telah berdaftar dengan Lembaga Pengurusan Industri Pembangunan Malaysia 1994. Pendaftaran ini adalah tertakluk kepada syarat-syarat yang telah ditetapkan bersama perakuan ini.

No. Pendaftaran : 0120150519-PP163488  
Nama Kontraktor : BSE TECHNOLOGY (M) SDN. BHD.  
Alamat Berdaftar : 105-07-08 JALAN GUROWARA HEXAGON TECH PARK  
10300 GEORGETOWN  
PULAU PINANG

Daerah : TIMOR LAUT  
Tarikh Mula Berdaftar : 19/05/2015

OSKO	KATEGORI	PENOKHJUAN
06	B	B04 B27
06	CE	CE21 CE38
06	ME	M04 M16

Tarikh Mula Berkualiti : 19/01/2022  
Tarikh Habis Tempoh Perakuan : 22/03/2023  
STATUS: AKTIF

Ketua Eksekutif  
Lembaga Pembangunan Industri Pembangunan Malaysia  
Tarikh: 13/01/2022



**CIDB**

Construction Industry  
Development Board



**KEMENTERIAN KEWANGAN MALAYSIA**  
**SIJIL AKUAN PENDAFTARAN SYARIKAT**

NO. SIJIL : K6620206433141317  
NO. RUJUKAN PENDAFTARAN : 357-02240153  
TEMPOH SAH LAKU : 07/02/2022 - 06/03/2025

Bahawa dengan ini diperakui syarikat :

BSE TECHNOLOGY (M) SDN. BHD. ( 658137-D )  
NO.33 & 33A  
JALAN PUSAT PERNIAGAAN RAJA UDA 4  
SEBERANG PERAI UTARA  
12300 BUTTERWORTH  
PULAU PINANG, MALAYSIA

Telah berdaftar dengan Kementerian Kewangan Malaysia dalam bidang bekalan/perkhidmatan di bawah sektor, bidang dan sub-bidang seperti di Lampiran A. Kelulusan ini adalah tertakluk kepada syarat-syarat seperti yang dinyatakan di Lampiran B. Individu yang diberi kuasa oleh syarikat bagi urusan perolehan Kerajaan adalah seperti berikut :

TUAN TEH GIM HOI 760818075001 PENGARAH

LI

DATO' ZAMZURI BIN ABDUL AZIZ  
Bahagian Perolehan Kerajaan  
b.p. Ketua Setiausaha Perbendaharaan  
Kementerian Kewangan Malaysia

Tarikh Berdaftar Dengan Kementerian Kewangan Malaysia : 07/02/2022

(Sijil ini adalah cetakan komputer dan tidak memerlukan tandatangan)

**KKM**

Kementerian Kewangan  
Malaysia

www.bse-tech.com



# CERTIFICATE ISSUED BY ABB MALAYSIA



Certificate of Appointment



# **PRODUCT & BRANDS**



**FLOTEC**

**ABB**



**SIEMENS**

**CHEMPRO**



**ChemPro**

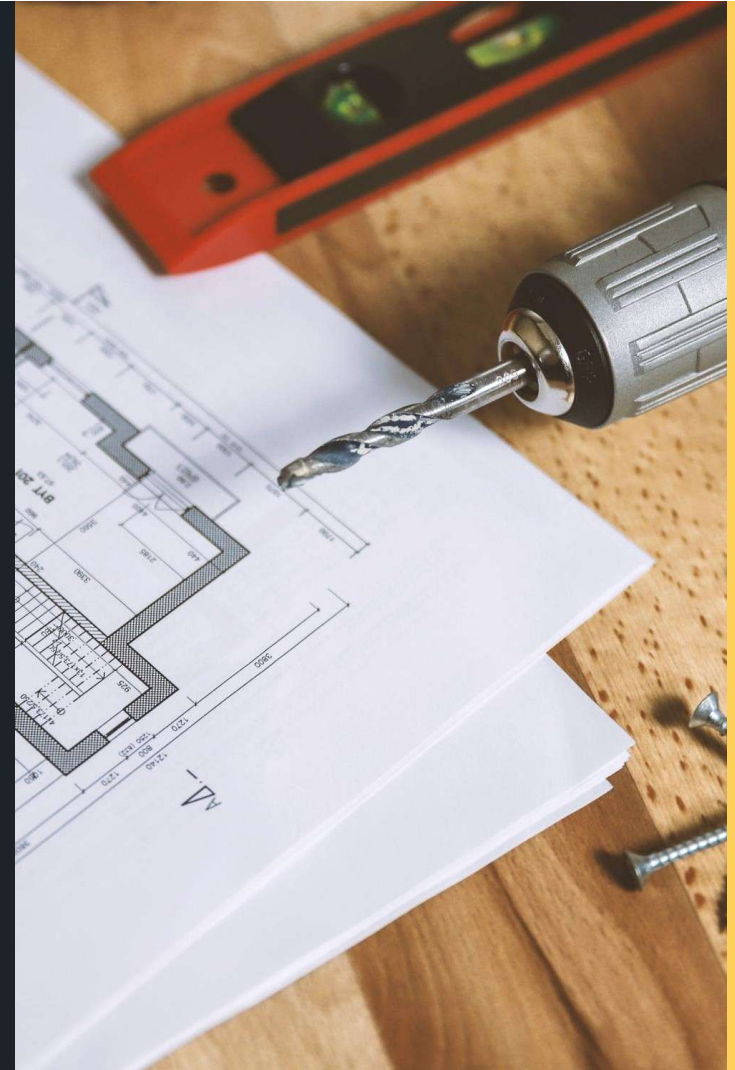


**MYSCADA**

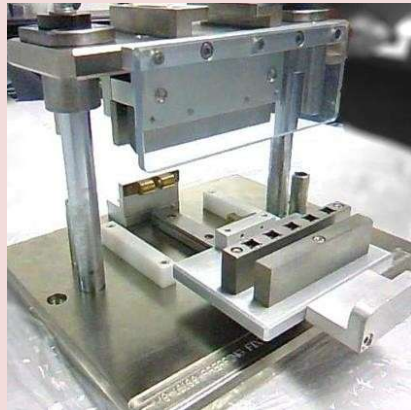
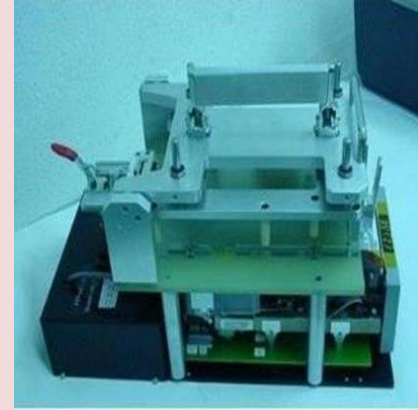


# WHAT WE PROVIDE

- **AUTOMATION**
- **ENGINEERING WORKS**
- **CLEANROOM**
- **INDUSTRIAL INTEGRATION SOLUTIONS & SUPPLY**
- **VISION SYSTEM OR TESTER MACHINE**
- **LASER MARKING MACHINE**
- **JIG AND FIXTURE**
- **ROBOTIC SYSTEM**
- **SCADA MONITORING SYSTEM, ERP & MES**



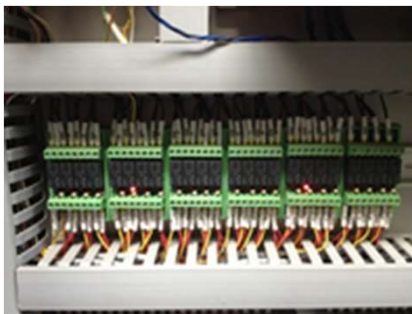
## JIG & FIXTURE



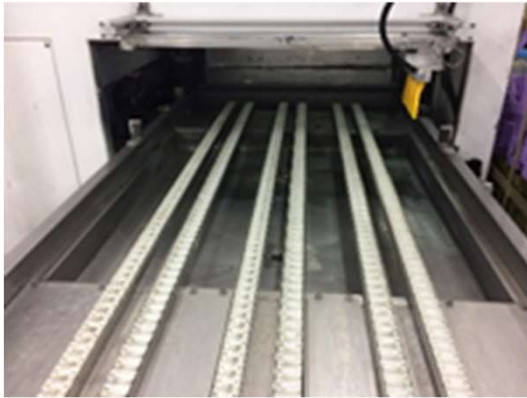


### ENGINEERING & TECHNICAL SERVICES:

- Equipment design and development,
- Production layout planning and design
- Mechanical, Electrical & Controls installation, Wire Harness & Control panel wiring.
- Machines operating sequence software programming







## CONVEYOR SYSTEMS

- Belt Conveyors
- Chain Conveyors
- Roller Conveyors
- Transfers and Diverter units
- Lifters systems
- Production / Distribution Controls & Programming



# System integrations for standard tools

- Atlas Copco – Smart tools
- FIAM – Smart tools
- YAMAHA – Robots

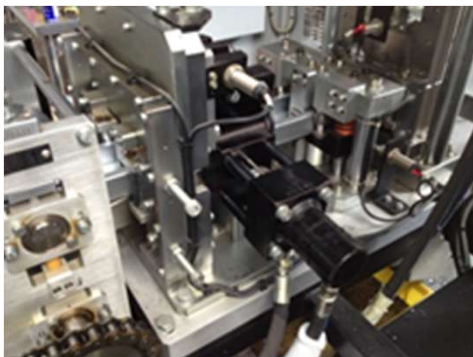
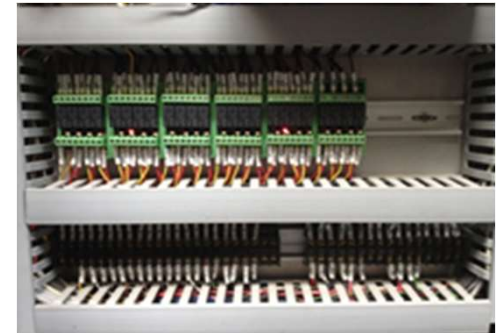


# PROJECT PHOTOS





# PROJECT PHOTOS



“

# Production Line – Machinery



# FULLY AUTO ASSEMBLY LINE



LIFTER & LINK  
CONVEYOR



WORK CELL  
(MANUAL ASSEMBLY)



LINK  
CONVEYOR



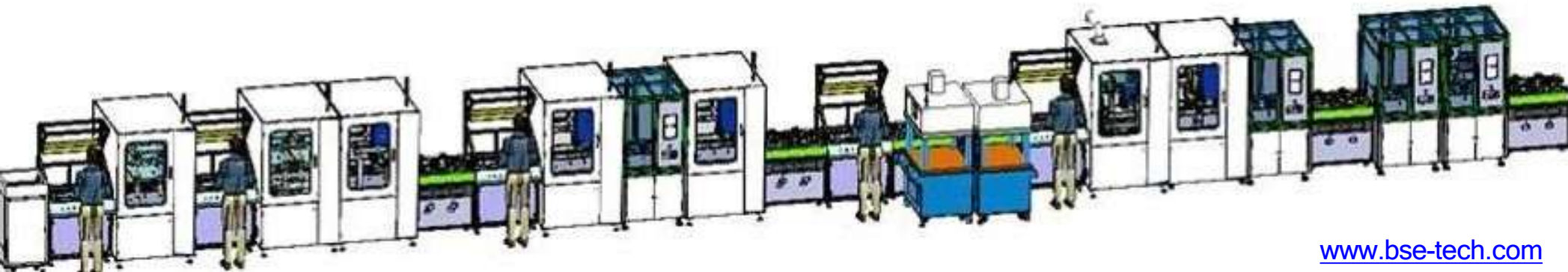
AUTO  
FASTENING  
MACHINE



AUTO  
LABELING  
MACHINE

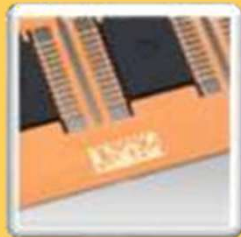


AUTO  
DISPENSING  
MACHINE



# LASER MARKING MACHINE

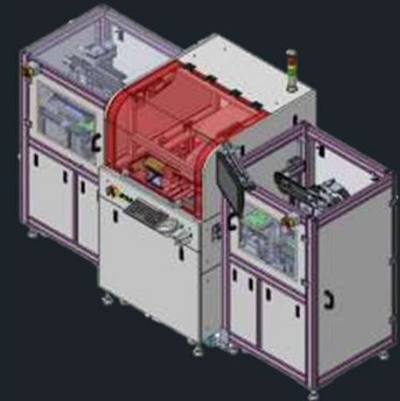
(LEAD FRAME)  
SEMICONDUCTOR



(BATTERY)  
ELECTRONIC



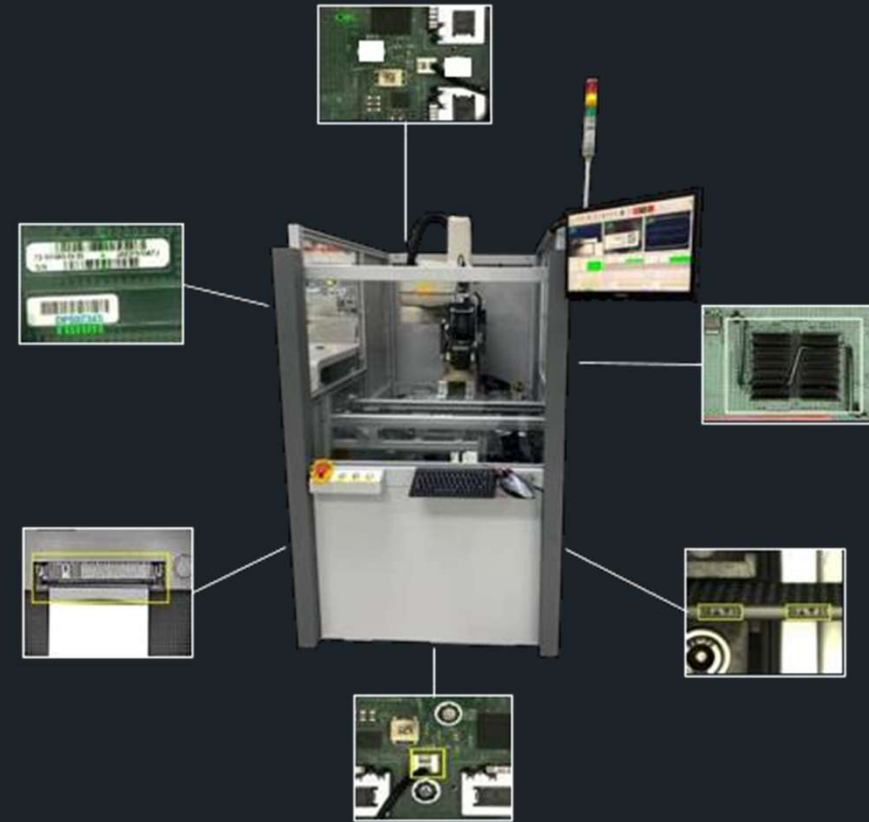
(PCB) ELECTRONIC



# VISION INSPECTION MACHINE

## ***Customer Requirements***

- Machine can used either (Scara Robot or 6 Axis Robot), in line chain conveyor (Smema communication) with rotating table.
- The system capable of inspecting EMS backend UUT quality, example components missing, incorrect labeling, pin bending and etc.
- This system is in line system, reduce operator head count and 100% visual checking, better quality control.
- Data collected by the system enables the customer to collect valuable inspection data in order to drive manufacturing process improvement.



## Label applicators or Pick and Place Machine



**Back end VISION Inspection**

[www.bse-tech.com](http://www.bse-tech.com)

“

# **Production Line – Monitoring and Control System (SCADA)**



# SCADA Monitoring System





## Control Panel Sample



## MACHINE STATUS LINE LAYOUT

3/18/2015

02:33:20 PM

MAIN PAGE

STATUS REPORT

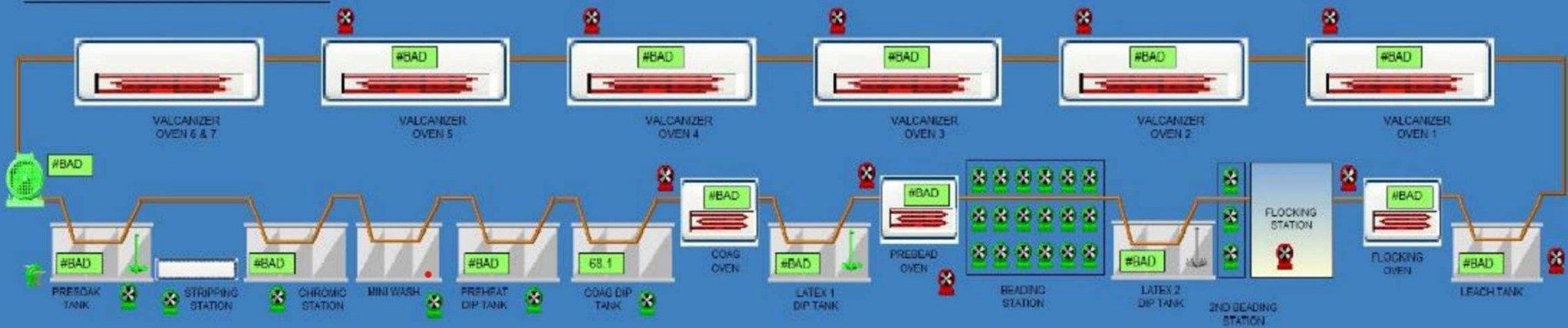
LINE LAYOUT

AG 1 LATEX  
TANK LAYOUT

AG 2 LATEX  
TANK LAYOUT

SAFETY SENSOR  
EMERGENCY STOP

### LINE LAYOUT - AG1

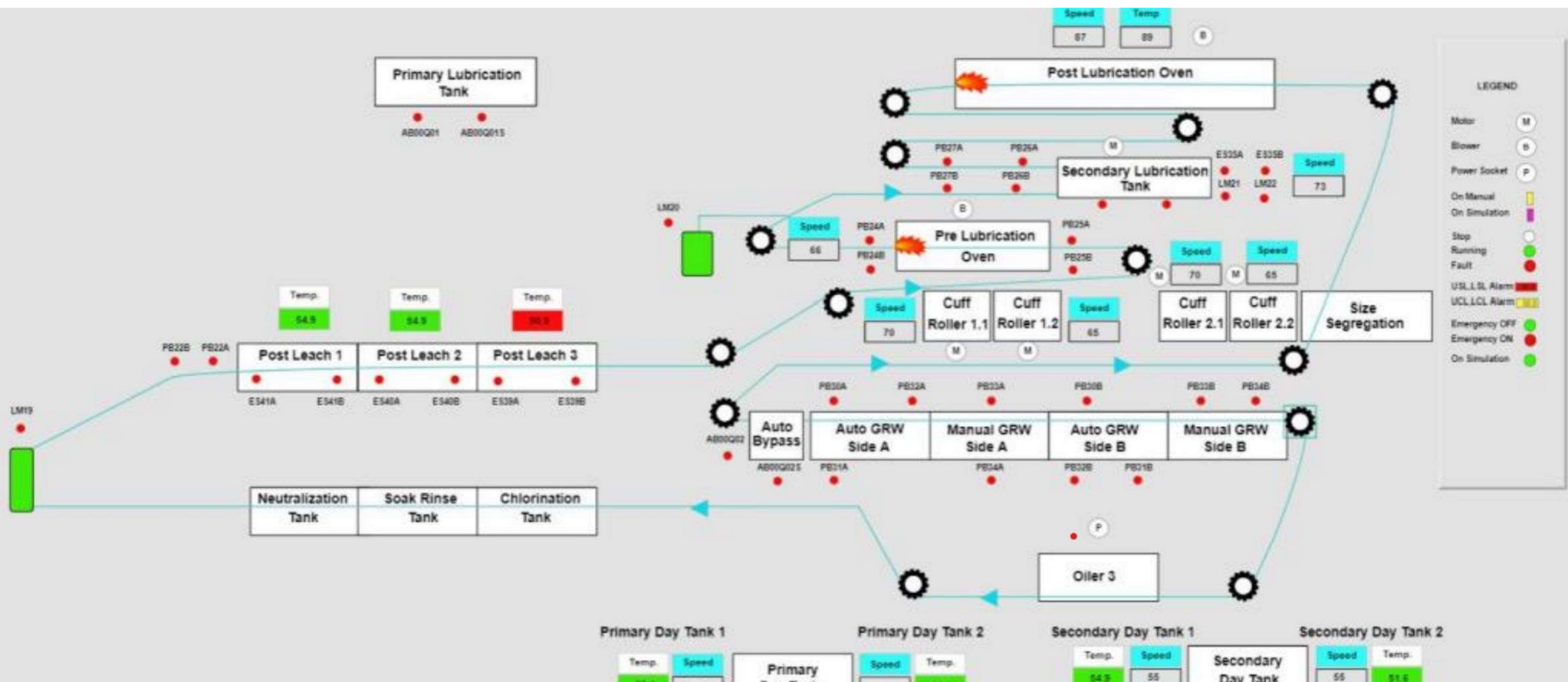


## SCADA Sample Pages

Overview Display 1



[www.bse-tech.com](http://www.bse-tech.com)



# SCADA Sample Pages

Overview Display 3





PRODUCT NAME:		PRINT PERIOD										60 minutes		LINE SPEED		58		PCS/MIN	
GAS BURNER CURE ZONE CONTROL AND STATUS (DEGREES C)														1 minute 5 minutes 20 minutes 30 minutes 60 minutes No Print		EMERGENCY STOP CONTROL			
NUMBER		6		7		8						10		1		2			
OVEN ZONE		GAS BURNER 6		GAS BURNER 7		GAS BURNER 8		GAS BURNER 9		GAS BURNER 10		AT BEADER		AT PANEL					
TEMP SV		110.00		120.00		152.00				152.00		ON		ON					
TEMP PV		110.10		120.10		151.90		157.00		152.00		MASTER SHUTDOWN							
TEMP STATUS		HIGH	OK	LOW	HIGH	OK	LOW	HIGH	OK	LOW	HIGH	OK	LOW	Shutdown On					
TANK NUMBER		TEMPERATURE CONTROL (DEGREE C)								LEVEL FILLING CONTROL (cm)									
		TEMP SV		TEMP PV		TEMP STATUS		LEVEL SV		LEVEL PV		LEVEL STATUS		OVERFLOW SW					
COAGULANT		56.00		55.40		HIGH OK LOW										Normal			
LATEX 1		26.00		26.60		HIGH OK LOW		46.60		46.60		HIGH OK LOW		Normal					
LATEX 2		23.00		36.90		HIGH OK LOW		45.00		42.90		HIGH OK LOW		Normal					
PRE-LEACH 1		63.00		64.50		HIGH OK LOW													
PRE-LEACH 2		63.00		63.50		HIGH OK LOW													
PRE-LEACH 3		63.00		65.40		HIGH OK LOW													
PRE-LEACH 4		63.00		64.70		HIGH OK LOW													
PRE-LEACH 5		63.00		62.00		HIGH OK LOW													
POLYMER / SILICONE		25.00		24.60		HIGH OK LOW		43.70		44.10		HIGH OK LOW		Normal					
POST LEACH 3		63.00		42.00		HIGH OK LOW													
POST RINSE 3		66.00		65.30		HIGH OK LOW													
POST-RINSE 4		66.00		64.90		HIGH OK LOW													
SILICONE / SLURRY		*****		*****		HIGH OK LOW										Over Flow			
MAIN LAYOUT		CONTROLLER SETTING 1		CONTROLLER SETTING 2		CONTROLLER SETTING 3		TREND HISTORY		ACTIVE ALARM		ALARM HISTORY		PLC IO		RECIPE			

## SCADA Sample Pages

### Summary Report 1



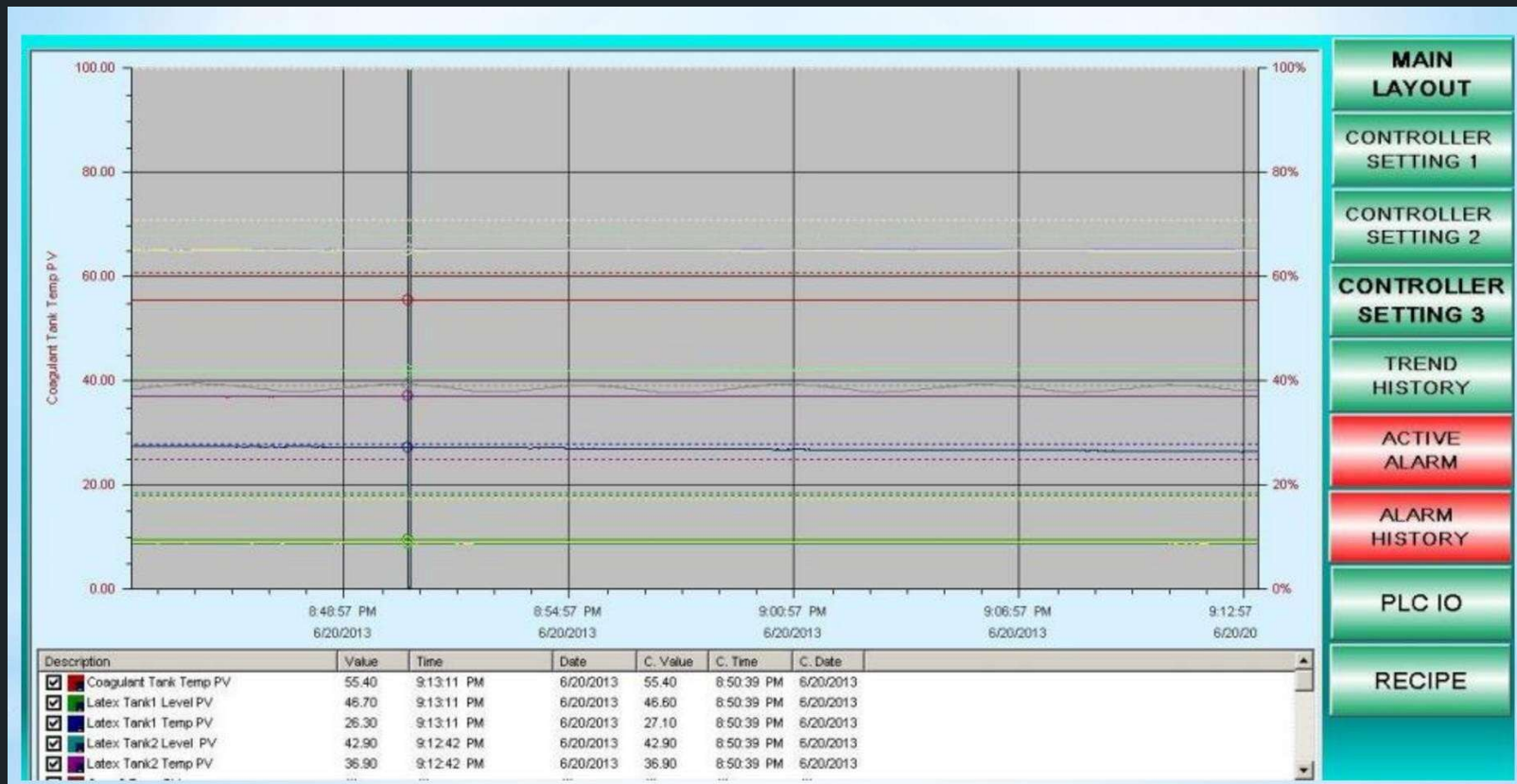




## SCADA Sample Pages

Parameter Setting 1





## SCADA Sample Pages

### Trending Display 1



Severit	State	Node	Area	Tagname	Description	Type	Time	Limit	Operator	Qui
2	ACK_ALM	SERVER02	Latex_mix	TTLX5001.UCL	Reset by: Somchai Ngonmanee	DSC	17/04/2020 09:00:46	true	102163	
2	ACK_ALM	Server01	Latex_mix	TTLX5001.UCL	Reset by: Somchai Ngonmanee	DSC	17/04/2020 09:00:46	true	102163	
1	ACK_ALM	Server01	Coagulant	PTCG0005.LSL	Reset by: Somchai Ngonmanee	DSC	17/04/2020 09:00:46	true	102163	
1	ACK_ALM	SERVER02	Coagulant	PTCG0005.LSL	Reset by: Somchai Ngonmanee	DSC	17/04/2020 09:00:46	true	102163	
2	ACK_ALM	Server01	Dip_Line_L	TT00L47.UCL	Reset by: Adul Kokthong	DSC	17/04/2020 09:00:28	true	106655	
2	ACK_ALM	SERVER02	Dip_Line_L	TT00L47.UCL	Reset by: Adul Kokthong	DSC	17/04/2020 09:00:28	true	106655	
1	ACK_ALM	SERVER02	Dip_Line_L	LT00L01.LSL	Reset by: Adul Kokthong	DSC	17/04/2020 09:00:04	true	106655	
1	ACK_ALM	Server01	Dip_Line_L	LT00L01.LSL	Reset by: Adul Kokthong	DSC	17/04/2020 09:00:04	true	106655	
1	ACK_ALM	SERVER02	Dip_Line_L	TT00L15.LSL	Reset by: Adul Kokthong	DSC	17/04/2020 08:58:31	true	106655	
1	ACK_ALM	Server01	Dip_Line_L	TT00L15.LSL	Reset by: Adul Kokthong	DSC	17/04/2020 08:58:31	true	106655	
2	ACK_ALM	SERVER02	Dip_Line_L	TT00L15.LCL	Reset by: Adul Kokthong	DSC	17/04/2020 08:58:31	true	106655	
2	ACK_ALM	Server01	Dip_Line_L	TT00L15.LCL	Reset by: Adul Kokthong	DSC	17/04/2020 08:58:31	true	106655	
1	ACK_ALM	Server01	Dip_Line_L	LT00L07.USL	Reset by: Adul Kokthong	DSC	17/04/2020 08:58:31	true	106655	
1	ACK_ALM	SERVER02	Dip_Line_L	LT00L07.USL	Reset by: Adul Kokthong	DSC	17/04/2020 08:58:31	true	106655	
2	ACK_ALM	SERVER02	Dip_Line_L	LT00L07.UCL	Reset by: Adul Kokthong	DSC	17/04/2020 08:58:31	true	106655	
2	ACK_ALM	Server01	Dip_Line_L	LT00L07.UCL	Reset by: Adul Kokthong	DSC	17/04/2020 08:58:31	true	106655	
1	ACK_ALM	SERVER02	Dip_Line_L	LT00L01.USL	Reset by: Adul Kokthong	DSC	17/04/2020 08:58:31	true	106655	
1	ACK_ALM	Server01	Dip_Line_L	LT00L01.USL	Reset by: Adul Kokthong	DSC	17/04/2020 08:58:31	true	106655	
2	UNACK_ALM	Server01	Dip_Line_P	TT00P15.LCL	Low Alarm	DSC	17/04/2020 08:58:20	true		
2	UNACK_ALM	SERVER03	Dip_Line_P	TT00P15.LCL	Low Alarm	DSC	17/04/2020 08:58:20	true		
1	UNACK_ALM	Server01	Coagulant	PTCG0005.LSL	Low Low Alarm	DSC	17/04/2020 08:54:25	true		
1	UNACK_ALM	SERVER02	Coagulant	PTCG0005.LSL	Low Low Alarm	DSC	17/04/2020 08:54:25	true		
1	ACK_RTN	Server01	Dip_Line_P	LT00P01.USL	Reset by: Adul Kokthong	DSC	17/04/2020 08:52:40	true	106655	
1	ACK_RTN	Server01	Dip_Line_P	LT00P07.USL	Reset by: Adul Kokthong	DSC	17/04/2020 08:52:40	true	106655	
1	ACK_RTN	SERVER03	Dip_Line_P	LT00P07.USL	Reset by: Adul Kokthong	DSC	17/04/2020 08:52:40	true	106655	
1	ACK_RTN	SERVER03	Dip_Line_P	LT00P01.USL	Reset by: Adul Kokthong	DSC	17/04/2020 08:52:40	true	106655	
2	ACK_RTN	SERVER03	Dip_Line_P	LT00P07.UCL	Reset by: Adul Kokthong	DSC	17/04/2020 08:52:39	true	106655	
2	ACK_RTN	Server01	Dip_Line_P	LT00P07.UCL	Reset by: Adul Kokthong	DSC	17/04/2020 08:52:39	true	106655	
2	UNACK_RTN	SERVER02	Dip_Line_M	LT00M07.LCL	Low Alarm	DSC	17/04/2020 08:52:12	true		
2	UNACK_RTN	Server01	Dip_Line_M	LT00M07.LCL	Low Alarm	DSC	17/04/2020 08:52:12	true		
2	UNACK_ALM	SERVER02	Dip_Line_M	LT00M07.LCL	Low Alarm	DSC	17/04/2020 08:52:11	true		
2	UNACK_ALM	Server01	Dip_Line_M	LT00M07.LCL	Low Alarm	DSC	17/04/2020 08:52:11	true		
2	UNACK_RTN	Server01	Dip_Line_L	TT00L47.UCL	High Alarm	DSC	17/04/2020 08:52:06	true		
2	UNACK_RTN	SERVER02	Dip_Line_L	TT00L47.UCL	High Alarm	DSC	17/04/2020 08:52:06	true		

## SCADA Sample Pages

Alarm History Page 2



## Function

- ▶ Sale & Purchase Management
- ▶ Raw Material Management
- ▶ Scheduling & Planning
- ▶ Product Management
- ▶ Production Execution
- ▶ Quality Control
- ▶ Warehouse Management
- ▶ Machine Monitoring
- ▶ Machine Integration

# SCADA: MANUFACTURING EXECUTION SYSTEM

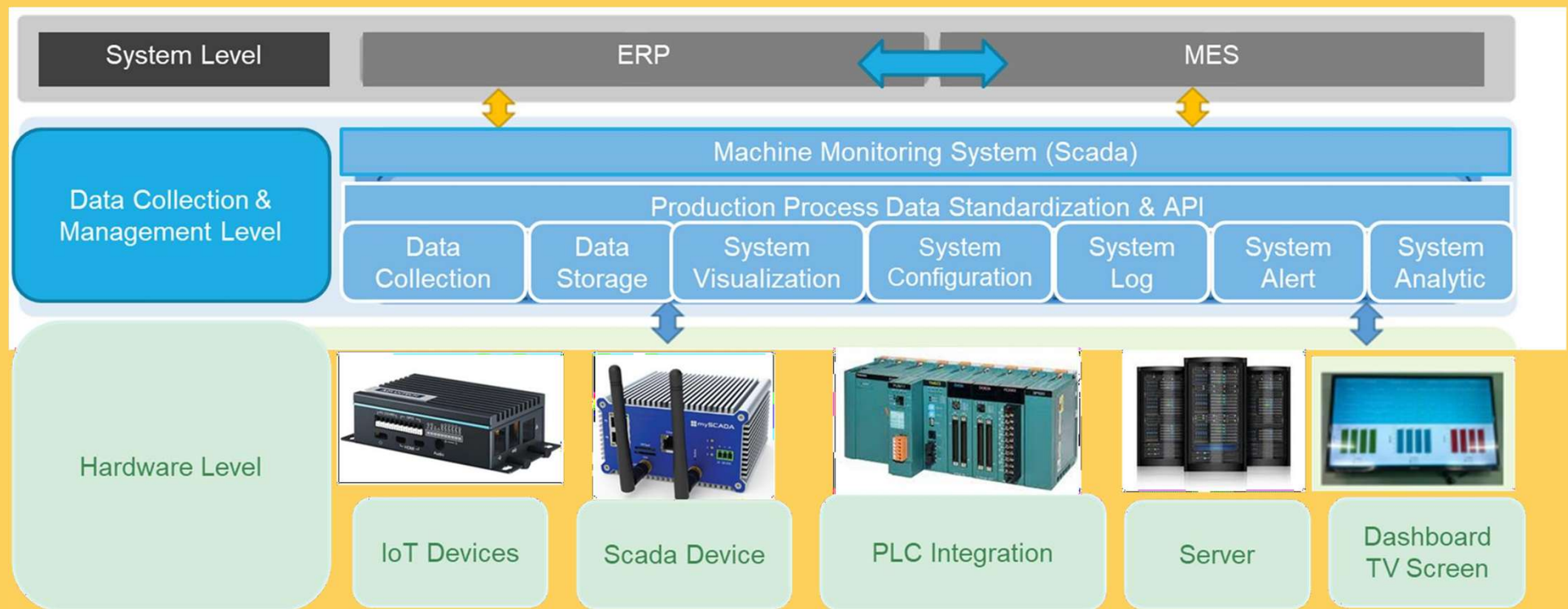
System offers you multiple solutions to ease your work systematically. It provides you a work-flow based approach, machine monitoring, scheduling & etc.

## Utility

- ▶ Improve Efficiency
- ▶ Enhance Productivity
- ▶ Peace of Mind Operation
- ▶ Provide Visibility of Machine
- ▶ Operation Status
- ▶ Real Time Information



# MES: Overall System Design



# Quality Control:

Quality & Quantity Control Management

QC Monitoring   QC Records   History

**Line 1**

PO Number	4500058897
Part No	5790-0017-0022
Part Name	Nitrile Glove – Size M
PO Qty	5000
QC Date	03/11/2021 7:37:08:PM
QC Pass Qty	2808
QC Reject Qty	0
Rejection Rate	0.00%

**Line 2**

PO Number	PO_AHM_21-01009
Part No	MY4208MLLP
Part Name	Nitrile Glove – Size L
PO Qty	
QC Date	02/11/2021 8:09:08:PM
QC Pass Qty	3960
QC Reject Qty	241
Rejection Rate	6.09%

**Line 3**

PO Number	WFI019594-1
Part No	2500067
Part Name	Nitrile Glove – Size XL
PO Qty	80000
QC Date	02/11/2021 11:24:05:PM
QC Pass Qty	46000
QC Reject Qty	0
Rejection Rate	0.00%

Record the inspection results in detail, truly control the quality of raw materials, and reduce derivative problems caused by poor quality of raw materials

Machine WY160   17/01/2022   11:51:36 AM   ON

2201164

**Select One Reason Code**

Pinhole

Stains

Steaky

Dented

Torn

Coagulum

**Product Defective Reasons**

Cycle Time

Counter

Progress

Expected Hours

**Line 2**   17/01/2022   11:52:16 AM   ON

2201164   Restart   Finish

Part No  
P50GX72MM-N

Part  
50G X 7  
4CAV PET  
(NO

Production  
Quantity  
23454

Total Reject(0)

Cycle Time  
31.3

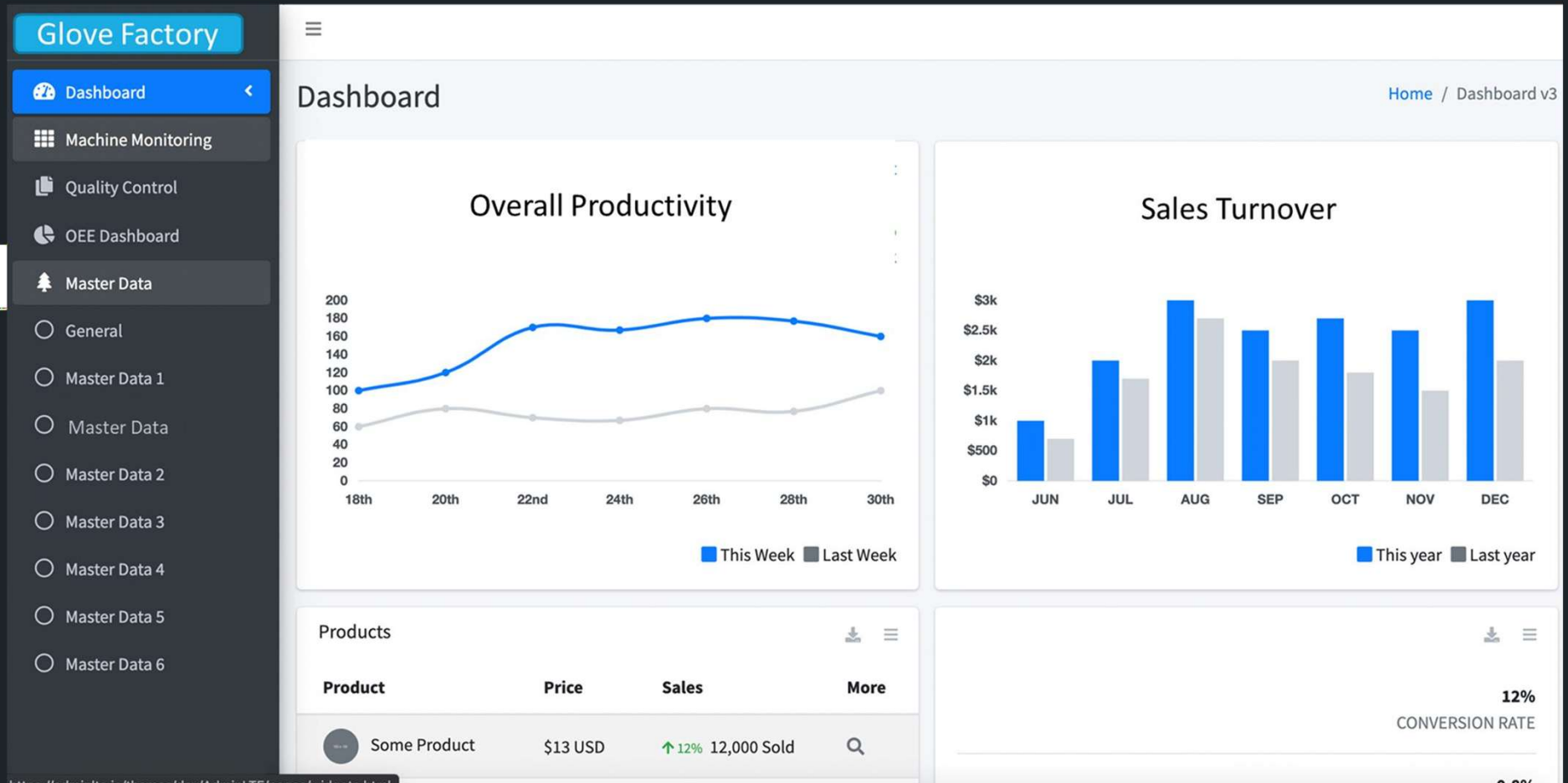
Counter  
1068

Progress  
4.55%

Expected Hours  
Left  
48.66 hours

Web App Restart

# Customized Dashboard:



# MAIN CUSTOMERS

**Jinko** Solar



**AT&S**



**infineon**





## MAIN CUSTOMERS

JABIL

OLYMPUS®

FRONTKEN



**Nidec**  
All for dreams



First Solar®

# Cleanroom Solutions



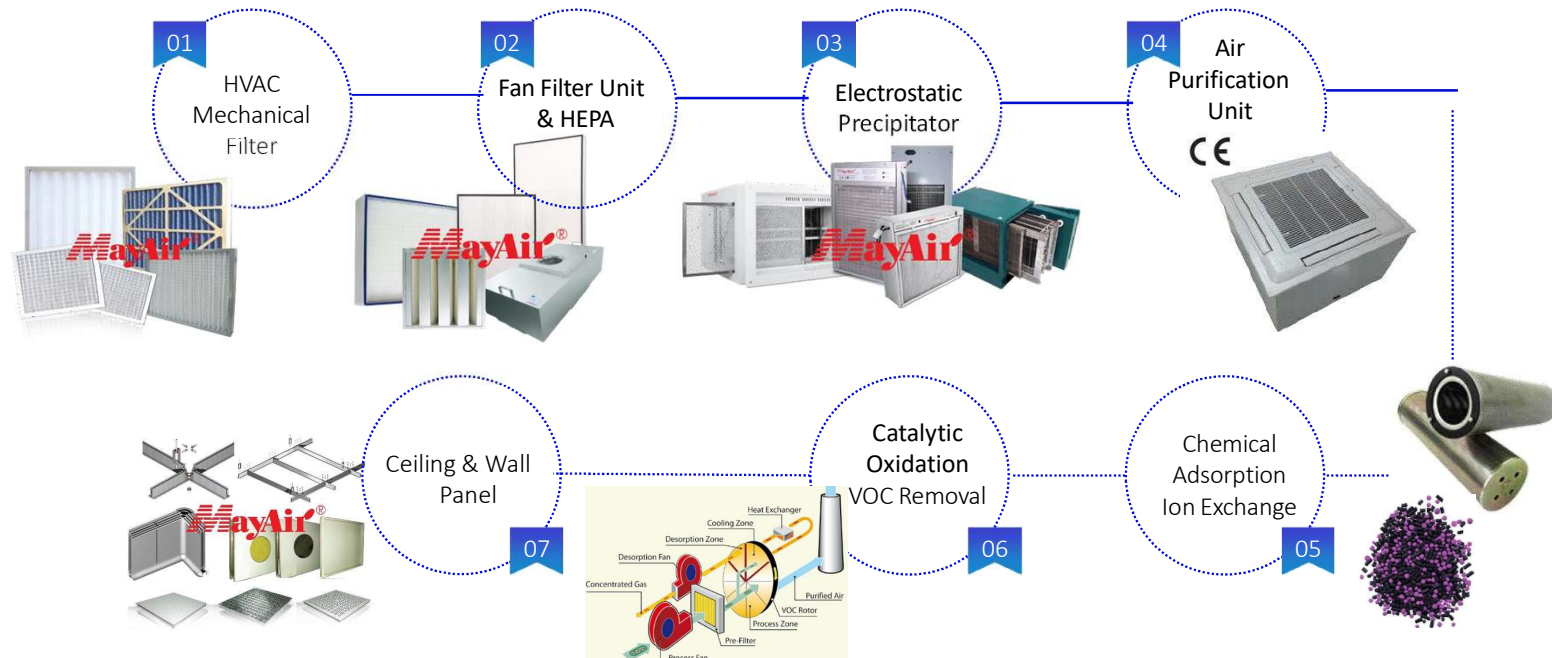
GLOBAL CLEAN TECH SOLUTIONS PROVIDER

CLEAN AIR | OUR FUTURE

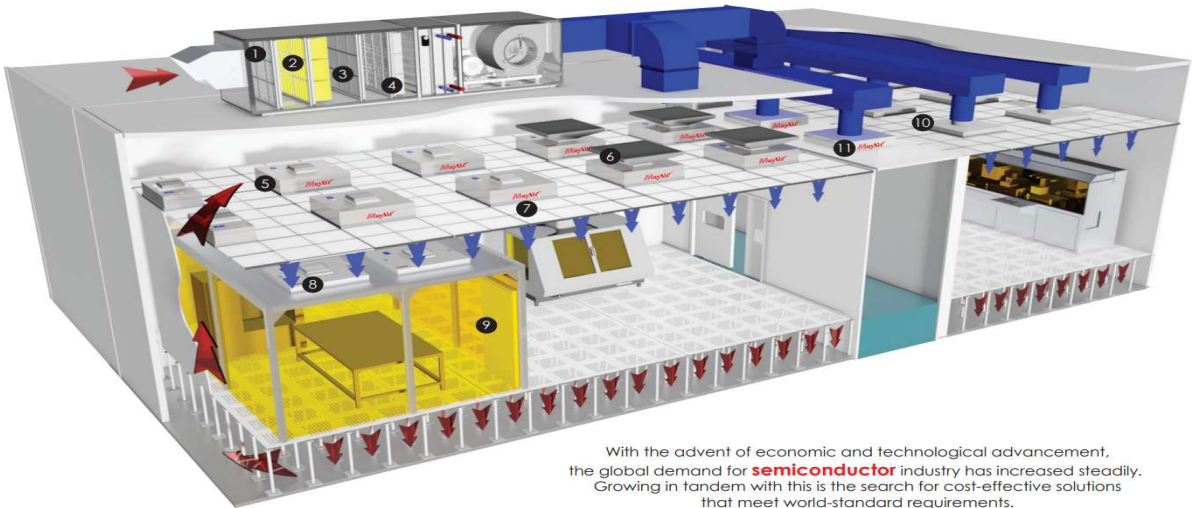


## CORE TECHNOLOGY

- Continuous innovation to meet customers' needs and widen product range.
- Persistent in providing cost effective clean air solutions in various application with leading technology.



# Cleanroom for Semiconductor



With the advent of economic and technological advancement, the global demand for **semiconductor** industry has increased steadily. Growing in tandem with this is the search for cost-effective solutions that meet world-standard requirements.

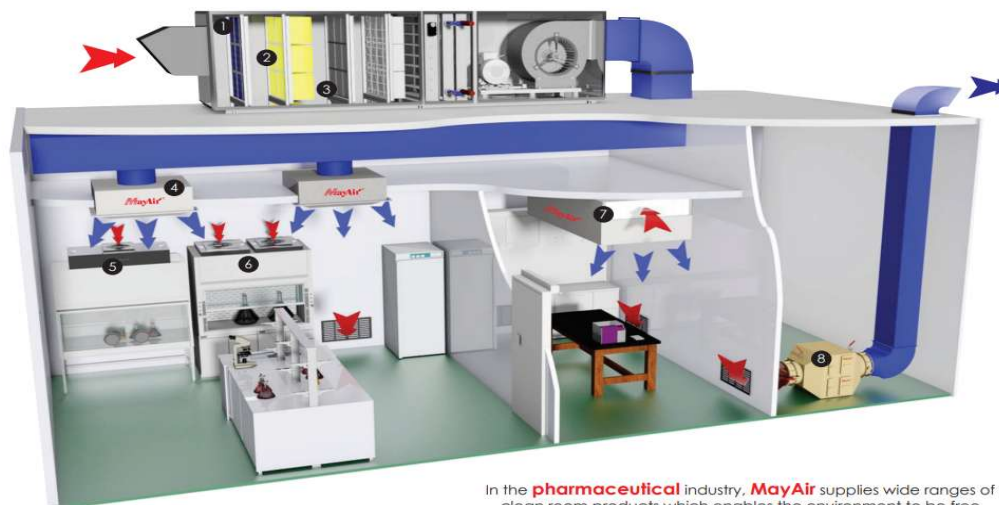
Recommended range of products:

- |   |   |   |   |   |   |
|---|---|---|---|---|---|
| <br>Primary Filter<br>pg 14    | <br>Secondary Filter<br>pg 23      | <br>Carbon Filter<br>pg 105 | <br>HEPA/ ULPA Filter<br>pg 34 | <br>Fan Filter Unit<br>pg 62 | <br>Chemical Filter<br>pg 49 |
| <br>HEPA/ ULPA Filter<br>pg 34 | <br>Equipment Filter Unit<br>pg 57 | <br>Clean Booth<br>pg 81    | <br>HEPA-BOX<br>pg 75          | <br>Ceiling Module<br>pg 73  |   |



## Cleanroom for pharmaceutical

Clean Air - Our Future  
www.mayair.com.my



In the **pharmaceutical** industry, **MayAir** supplies wide ranges of clean room products which enables the environment to be free from microbial and particulate contamination.

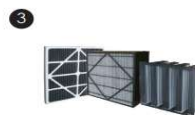
Recommended range of products:



Primary Filter  
pg 14



Secondary Filter  
pg 23



Carbon Filter  
pg 105



Ceiling Module  
pg 73



Equipment Filter Unit  
pg 57



Fan Filter Unit  
pg 62



Laminar Air Flow Hood  
pg 77



Bag-In-Bag-Out  
pg 74



## HVAC Mechanical Filter – Primary & Secondary

**Metal Mesh Filter**  
**M-NET**



**Disposable Panel Filter**  
**M-DP**



**Washable Panel Filter**  
**M-WASH**



**Washable Filter Media**  
**M-CUT**



**Pocket Filter**  
**M-PACK**



**Medium Efficiency Filter with Separator**  
**M-MI**



**Medium Efficiency V-Shaped Mini-Pleated Filter**  
**M-MV**



**Medium Efficiency Mini-Pleated Filter**  
**M-MII**





## FFU – Versatile Types of FFU Design for Different Cleanroom Applications

MayAir FFU has wide range of mechanical design and configurations to suit the application of different types of cleanrooms, Semiconductor & Electronics as well as Pharmaceutical Laboratories.



Equipment Fan Unit



Gel-Seal HEPA Design



Dry-Coil Design



EC Controller



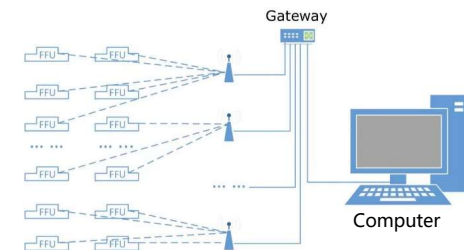
Bottom-Load with Cover Design



Bottom-Load with Flange Design



Bottom Load Design



MayAir Flonet System





## MAYAIR CERTIFICATIONS



**ONLINE CERTIFICATIONS DIRECTORY**

**AEOX.E336779**  
**Air Filtering Appliances**

Class Number

**Air Filtering Appliances**

See General Information for Air Filtering Appliances

**MAYAIR TECHNOLOGY (CHINA) CO., LTD.**  
24 Yinyang Road  
Jiangyin Economic Development Zone  
Nan Jing, Jiangsu 212208 CHINA

E336779

**Air Filter units, H14(H13) HEPA, FPU EC**  
**Calving Directed Air Fan Filter Unit, H14(H13) HEPA, FPU EC-S**

LAST LISTED on 2018-03-10

Quantity	Price	Unit of Measure	Mark
	EUR 200.0000		Mark 200

● P118 US, LLC

The appearance of a company's name or product in this database does not in itself assure that products so identified have been manufactured under ISO 9001 or ISO 14001. Only those products bearing the ISO Mark should be considered to be Certified and covered under the Technology Service. Always look for the Mark on the product.

1. In accordance with the registration of the material deposited in the Online Certification Directory subject to the following conditions: 1. The Online Certification Directory, including the Company Name, and/or Certification (they) must be presented in their entirety and in a non-representative manner, without any modification of the date or structure; 2. The information registered from the Online Certification Directory with permission from the "mark" holder is subject to the intellectual property. In addition, the registered material must include a copyright notice in the following form: "© 2018 US, LLC".









**1** GVS công nghiệp BJC Hygienist 3ply 700g  
*BJC Hygienist Jumbo Roll Bathroom Tissue 3ply 700 g*



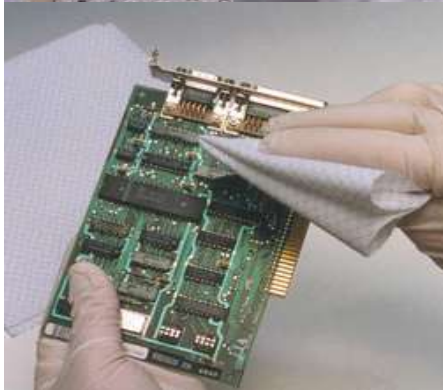
**2** GVS BJC Hygienist 3ply 120g 10 cuộn  
*BJC Hygienist Bathroom Tissue 3ply 120 g 10roll*



**3** Khăn giấy ăn BJC Hygienist 2ply 240-500G  
*BJC Hygienist Napkin Tissue 2ply 240-500 g*



**4** GVS BJC Hygienist 2ply 120g 10 cuộn  
*BJC Hygienist Bathroom Tissue 2ply 120 g 10 roll*









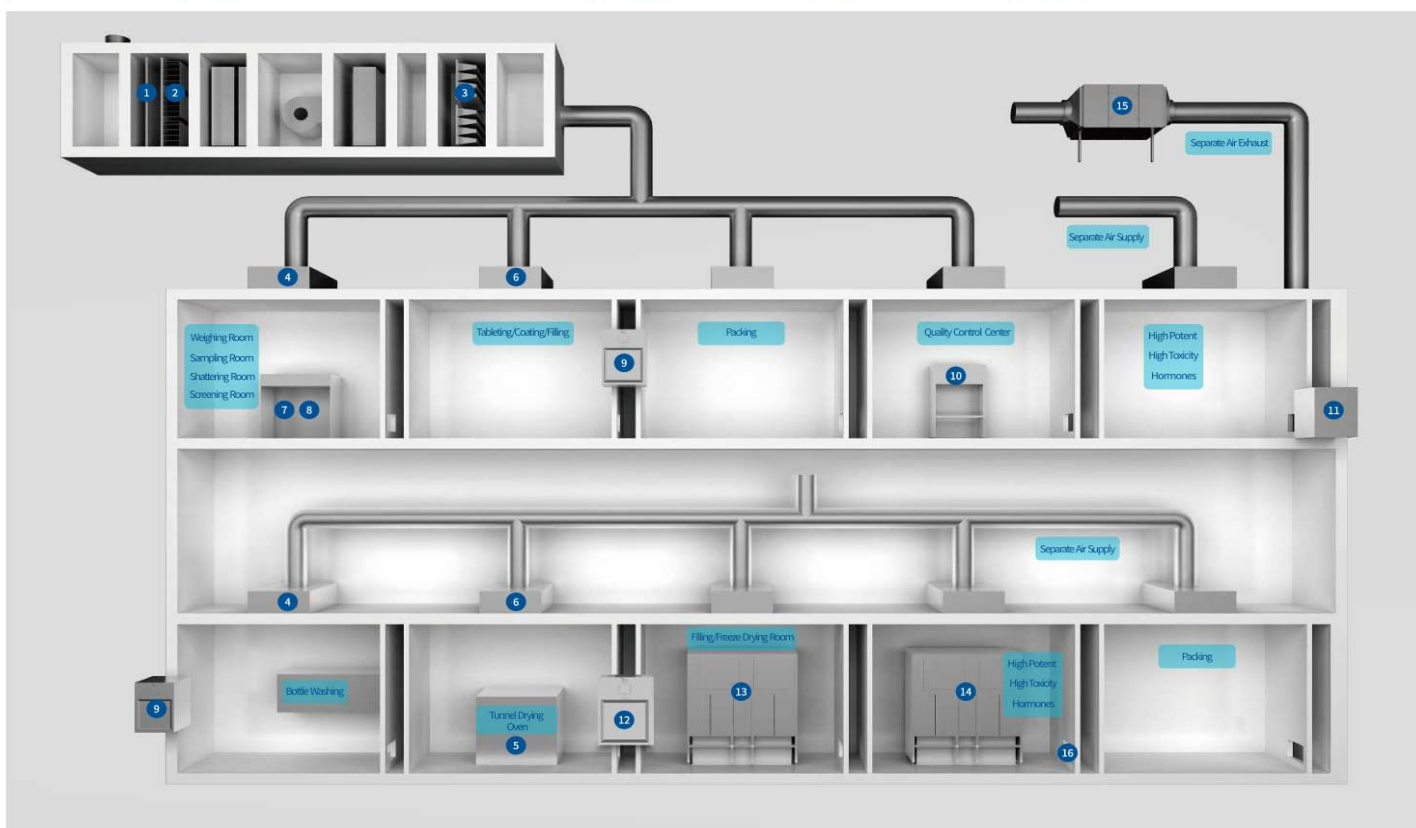
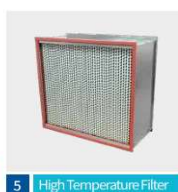


## LINE-LINK PRODUCTS



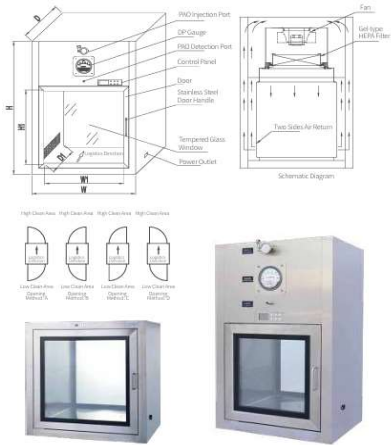
In 2003, Linsen Group introduced the CNC adjustable handmade panel forming production line, which has greatly promoted the development process of clean room modularization.

# Cleanroom Solution Application





## LL-DPB/SPB series



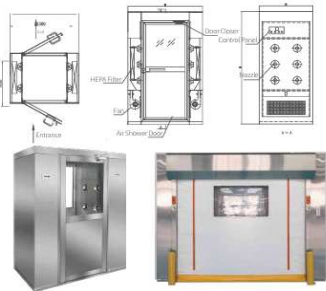
### Dynamic Pass Box/ Static Pass Box

The dynamic pass box can transfer materials and appliances under Class A environmental protection, and the materials and appliances will enter the sterile area after being cleaned in the dynamic pass box. They are mostly used in the general area to pass to Class D, Class C area.

- 01 Interlock, DP gauge, UV light, PAO injection and detection port, control panel, EBM fan.
- 02 Integrated arc design, no dead angle, easy to clean.
- 03 Double-layer negative pressure design, no risk of leakage.
- 04 The partition is well sealed, easy to operate and easy to maintain. age time
- 05 UV light can reckon by cumulative time, and it can be replaced (based on usage time)

Model	Specification (L×W×H)	Internal Size (W×D×H)	Rated Speed (m/s)	Cleanliness	Noise (dB)	Power (kw)
CDC4-50.50.50	700×560×1050	500×500×500	0.45±20%	Class A	65	0.15
CDC5-60.60.60	800×660×1150	600×600×600				0.15
CDC6-80.80.80	1000×860×1350	800×800×800				0.25

## LL-AS series



### Air Shower for Personnel / for Material

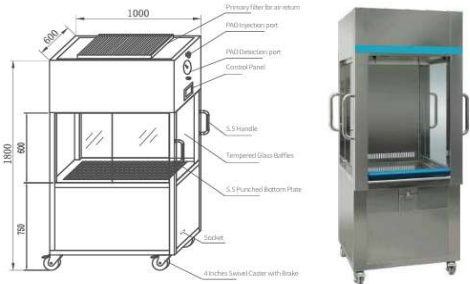
Air shower for personnel / for material series products are a purification equipment with strong versatility. They are generally installed between cleanroom and non-cleanroom. They are the passages for people or materials to enter the cleanroom. The clean air that is blown out can remove the dust carried by people and materials, and it can effectively block or reduce the dust source from entering the clean area. The front and rear doors of the air shower for personnel / for material are equipped with interlocks, which can also act as an air lock to prevent unpurified air from entering the clean area. The equipment is widely used in the fields of food, medicine, biological engineering and microelectronics, etc.

Model	Specification (W×D×H)	Internal Size (W×D×H)	Rated Speed (m/s)	Cleanliness of working area	Noise (dB)	Nozzle (Pcs)	HEPA size (L×W×D)
FLS 101	1300×1000×2270	800×900×2000	25	Class A	75	12	610×610×69×2
FLS 102	1300×2000×2270	800×1900×2000				24	610×610×69×4
FLS 103	1300×1500×2270	800×1400×2000				18	610×820×69×2
FLS 104	1300×3000×2270	800×2900×2000				36	610×820×69×6

## LL-MLAF series

### Class A Movable LAF

Class A Movable LAF is mainly used for aseptic transfer of materials and appliances between aseptic processes to realize aseptic docking. According to the different types of sterile materials, you can choose using vertical unidirectional flow or horizontal movable LAF



Model	External Size (L×W×H)	Internal Size (W×D×H)	Rated Wind Speed (m/s)	Working area cleanliness level	Noise (dB)	Illumination (lux)	Power (kw)
LL-MLAF-90.60	900×600×1800	820×580×750	0.45±20%	Class A	65	≥300	0.18
LL-MLAF-120.60	1200×600×1800	1120×580×750					0.25

## LL-ORABS series

### Open Restricted Access Isolation System

Open-RABS is through the forming of an airflow barrier between core area and background area to protect the sterile equipment in the core area. The operator can only operate with isolation gloves to prevent the risk of disturbing the sterile open area by direct contact.

Open-RABS can be equipped with wind speed, pressure difference and cleanliness level and other online monitoring devices.



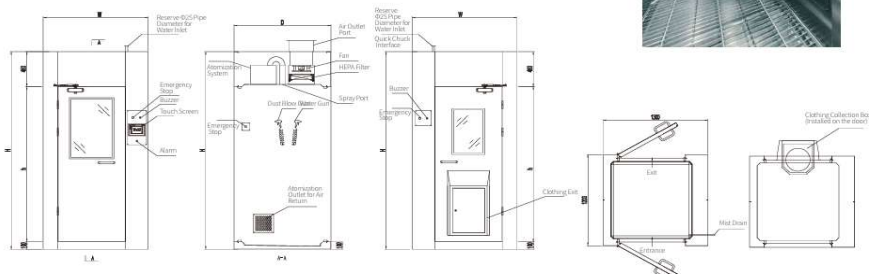


# Biological Protection Equipment

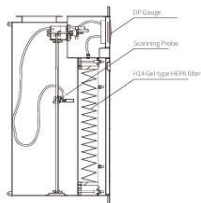
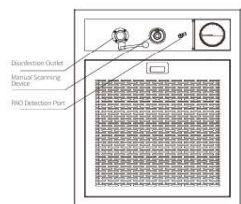
## LL-MS series Mist Shower

The mist shower is used in special environment such as laboratories or workshops to ensure that the active or toxic dust particles adhering to the surface of the clean clothes are removed by mist when the personnel leave the workshop during the production process or after the production.

The equipment is composed of four major systems: enclosure structure, water system, spray system and automatic control system.



## LL-HEV series



## Exhaust Outlet With HEPA Filter

Exhaust outlet with HEPA filter is mainly used in pharmaceutical, food, biological laboratories, hospitals and other fields. It is composed of a box, a HEPA filter, a diffuser, etc.. The primary filter section, HEPA filter section, scanning test section, molecular filtration section, aerosol injection, pressure difference detection and other components can be set according to requirements. With embedded installation design, it can be directly installed on the side wall of the cleanroom in the pharmaceutical factory.

- 01 The box is seamlessly welded to ensure good air tightness
- 02 Exhaust grille: orifice panel
- 03 The exhaust grille is installed and fixed with a special structure, which is convenient to disassemble and invisible installation, which is beautiful and easy to clean
- 04 The DP gauge monitors the resistance of the HEPA filter in real time
- 05 In-situ scanning for leak detection, in-situ online disinfection
- 06 The filter efficiency level can be selected according to the indoor cleanliness requirements.

## LL-BIBO series

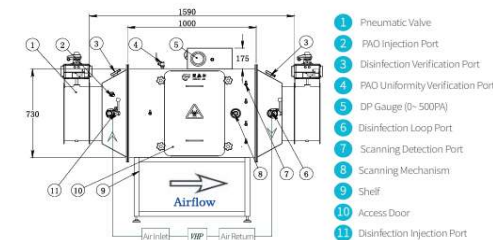


### Function Segment Selection

Frame Material	Seal	Upstream and Downstream Detection Ports
DP Gauge, Differential Pressure Sensor	Manual/Automatic Scanning Test Section	
Aerosol Generation Section, Mixing Section	Biological Sealing Valve	

## Bag In Bag Out

Bag In Bag Out Filter, commonly known as BIBO, also referred to as the duct-type air return filter device. Since the filter has retained highly active or highly toxic harmful aerosols during the working process, it is necessary to ensure that the filter does not have any contact with the external environment during the replacement process. It can effectively prevent the spread of harmful aerosols and avoid biological hazards to personnel and the environment. It is a filter device used in a specific biological environment to remove harmful biological aerosols in the air return process. At present, it is mainly used in high-level biosafety laboratories, hospital isolation rooms, pharmaceutical equipment, microelectronics environments, food processing areas, industrial processing exhaust systems, chemical processing equipment, air supply or exhaust air processing systems for animal disease research laboratories.



## LL-BIBO series

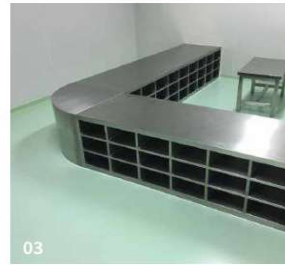
### Airtight Valve

The airtight valve is a key sealing device to prevent harmful gases from entering or discharging to other areas. The airtight valve has good air tightness. The airtight valve complies with the European and American EN12266-2 standard and the American ASME509 standard. And after 5000 times of opening and closing in the case of ISO10648-2 standard of 2500Pa, the net volume of the leakage rate is not higher than 0.2%h-1, ensuring zero leakage.

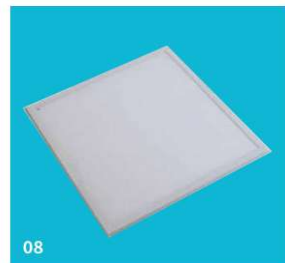
Material	SUS 304
Operation Method	Manual, Electric, Pneumatic
Surface Treatment	Brushed, Sandblasting



## Other Products



- 01. Sink
- 02. Locker
- 03. Cross Over Bench
- 04. Free door
- 05. Sliding Door
- 06. Fast door
- 07. Interlock System
- 08. LED light



## Flooring



Epoxy color sand floor

Epoxy floor

PVC floor



Mobile PCR test center



## Cleanroom Door and Window



Cleanroom Single Door



Emergency Door



Cleanroom Double Door



GMP Flush Type  
Single Door



GMP Flush Type  
Double Door



GMP Flush Type  
Big View Window Door



Single Glass View Window



Stainless Steel Hinge



GMP Flush Type  
Double View Window



LINE - LINK  
CLEANROOM TOTAL SOLUTION  
LINSEN GROUP

FOCUS ON CLEANROOM TECHNOLOGY  
TO BUILD INTERNATIONAL BRANDS

LINE-LINK  
PRODUCTS

## Project Reference





## LL-CRSW-50 series

### Structure Type

The 50mm metal surface handmade rock wool sandwich panel with MGO adopts color-coated or stainless steel sheet as the surface and the surrounding galvanized steel strips and galvanized corners are sealed, and the rock wool (can be water-proof) is filled with single or double layers of 5mm glass magnesium board as the inner core layer. Manufactured through processes such as heating, pressing, and curing.

### 50mm Metal Cleanroom Panel Handmade, rock wool



#### Physical Parameters

Total Thickness	50mm
Standard Size	980mm, 1160mm, 1180mm, 1200mm Other size customizable
Diagonal Tolerance	≤1mm
Max. Length	≤10000mm
Coating	PE, PVDF, Antistatic, Stainless steel, HDP and PVC coating etc.
Sheet Thickness	0.5mm, 0.6mm, 0.7mm, 0.8mm, 1.0mm
Insulation Material	Rockwool (Density: 100~120 kg/m³), 1 or 2 layers of MGO are available
Panel Frame	0.8mm, galvanized steel
Corner Connection	1.0mm, galvanized steel
Protection Film	0.06mm, customizable if t>0.06mm
Flexural Capacity	0.9KN/m²
Bonding Performance	0.15MPa
Peeling Performance	≥ 85%—≤ 98%
Heat-transfer Coefficient	0.73W/m²·K
Fire Resistance	1.0h
Connection Type	Aluminum joint type, continuous type



## LL-CRSW-50 series

### Structure Type

The 50mm metal surface handmade PU/EPS/PIR sandwich panel adopts color-coated or stainless steel sheet as the surface and the surrounding galvanized steel strips and galvanized corners are sealed, and PU/EPS/PIR is infilled as the inner core layer. Manufactured through processes such as heating, pressing, and curing.

### 50mm Metal Cleanroom Panel Handmade, PU/EPS/PIR



#### Physical Parameters

Total Thickness	50mm
Standard Size	980mm, 1160mm, 1180mm, 1200mm Other size customizable
Diagonal Tolerance	≤1mm
Max. Length	≤10000mm
Coating	PE, PVDF, Antistatic, Stainless steel, HDP and PVC coating etc.
Sheet Thickness	0.5mm, 0.6mm, 0.7mm, 0.8mm, 1.0mm
Insulation Material	PU/EPS/PIR (Density: 12~24 kg/m³)
Panel Frame	0.8mm, galvanized steel
Corner Connection	1.0mm, galvanized steel
Protection Film	0.06mm, customizable if t>0.06mm
Flexural Capacity	1.233KN/m²
Bonding Performance	0.027MPa
Peeling Performance	≥ 85%—≤ 94%
Heat-transfer Coefficient	1.012W/m²·K
Fire Resistance	0-0.5h
Connection Type	Aluminum joint type, continuous type



## LL-CRSW-50 series

### 50mm Metal Cleanroom Panel Handmade, Aluminum honeycomb



#### Structure Type

The 50mm metal surface handmade Aluminum honeycomb sandwich panel with MGO adopts color-coated or stainless steel sheet as the surface and the surrounding galvanized steel strips and galvanized corners are sealed, and Aluminum honeycomb is infilled and with double layers of MGO as the inner core layer. Manufactured through processes such as heating, pressing, and curing.



#### Physical Parameters

Total Thickness	50mm
Standard Size	980mm,1160mm,1180mm,1200mm Other size customizable
Diagonal Tolerance	≤1mm
Max. Length	≤10000mm
Coating	PE, PVDF, Antistatic, Stainless steel, HDP and PVC coating etc.
Sheet Thickness	0.5mm, 0.6mm, 0.7mm, 0.8mm, 1.0mm
Insulation Material	Aluminum honeycomb (Aperture 21mm, <21mm customizable)+2layers MGO
Panel Frame	0.8mm, galvanized steel
Corner Connection	1.0mm, galvanized steel
Protection Film	0.06mm, customizable if t>0.06mm
Flexural Capacity	0.9KN/m <sup>2</sup>
Bonding Performance	0.15MPa
Peeling Performance	≥ 85%—≤ 98%
Heat-transfer Coefficient	0.73W/m <sup>2</sup> ·K
Fire Resistance	1.0h
Connection Type	Aluminum joint type, continuous type



## LL-CRSW-50 series

### 50mm Metal Cleanroom Panel Handmade, paper honeycomb



#### Structure Type

The 50mm metal surface handmade paper honeycomb sandwich panel with MGO adopts color-coated or stainless steel sheet as the surface and the surrounding galvanized steel strips and galvanized corners are sealed, and paper honeycomb (can be non-flammable) is infilled and with double layers of MGO as the inner core layer. Manufactured through processes such as heating, pressing, and curing.



#### Physical Parameters

Total Thickness	50mm
Standard Size	980mm,1160mm,1180mm,1200mm Other size customizable
Diagonal Tolerance	≤1mm
Max. Length	≤10000mm
Coating	PE, PVDF, Antistatic, Stainless steel, HDP and PVC coating etc.
Sheet Thickness	0.5mm, 0.6mm, 0.7mm, 0.8mm, 1.0mm
Insulation Material	Paper honeycomb (Aperture 21mm, <21mm customizable)+2layers MGO
Panel Frame	0.8mm, galvanized steel
Corner Connection	1.0mm, galvanized steel
Protection Film	0.06mm, customizable if t>0.06mm
Flexural Capacity	1.222KN/m <sup>2</sup>
Bonding Performance	0.028MPa
Peeling Performance	≥ 85%—≤ 95%
Heat-transfer Coefficient	1.068W/m <sup>2</sup> ·K
Fire Resistance	1.0h
Connection Type	Aluminum joint type, continuous type



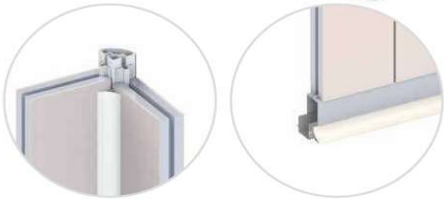
## LL-CRHW-50 series

HPL surface clean room  
Selection of handmade made  
Sandwich Panel

### Structure Type

The HPL surface handmade  
made sandwich panel adopts  
two layers of 5mm HPL as the  
surface, and the surrounding  
Aluminum frame, inner filling  
core material. Much stronger  
than European HPL panel.

### 50mm HPL Cleanroom Panel Handmade, rock wool



### Insulation



### Physical Parameters

Total Thickness	50mm
Standard Size	980mm, 1000mm, 1180mm
Max. Length	≤3000mm
HPL Thickness	5mm
Insulation material	Rock wool, Paper honeycomb, Aluminum honeycomb
Panel Frame	Aluminum
Protection Film	0.06mm, customizable if t>0.06mm
Connection Type	Aluminum joint type
Advantage-1	Can connect with regular wall panel system: save budget
Advantage-2	Resistant to H2O2, No scratching; strong

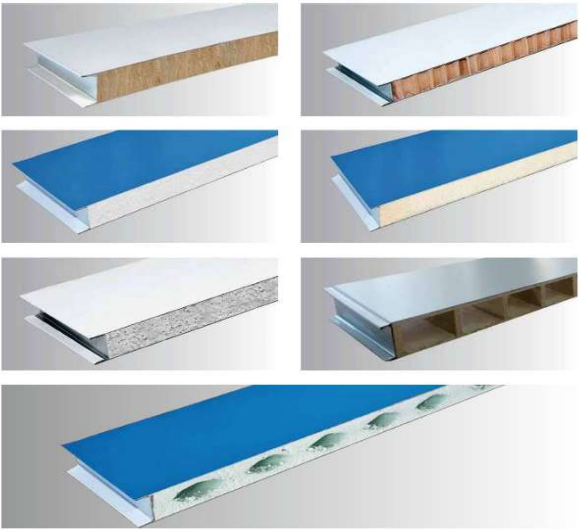
## LL-CRSW-50 series

For metal surface clean  
room Selection of Machine  
made Sandwich Panel

### Structure Type

The metal surface machine  
-made sandwich panel adopts  
color-coated galvanized steel  
sheets as the surface, and the  
surrounding galvanized steel  
strips, inner filling core materi-  
al, through high-speed contin-  
uous automation. The molding  
machine is heated, pressurized,  
compounded, trimmed, slot-  
ted, and formed by blanking. A  
new generation of building dec-  
oration panels; with thermal  
insulation, convenient installa-  
tion, etc.

### 50mm Metal Cleanroom Panel Machine made



### Physical Parameters

Total Thickness	50mm, 75mm, 100mm, 150mm, 200mm
Standard Size	950mm, 1150mm
Max. Length	≤10000mm
Coating	PE
Sheet Thickness	0.426mm, 0.45mm, 0.476mm, 0.5mm
Insulation material	Rock wool, silica rock, foam, polyurethane, paper honeycomb, hollow glass magnesium, magnesium oxysulfide, etc. ,
Panel Frame	0.45mm, 0.5mm (thickness optional)
Protection Film	0.06mm thick, more than 0.06mm can be customized
Connection Type	Continuous type
Type	H board (flat plate, profiled), grooved board, corrugated sandwich board

# LL-CRSW-100 series

## Structure Type

The 100mm metal surface cleanroom handmade double gypsum board with air return adopts color-coated or stainless steel sheet as the surface and the surrounding galvanized steel strips and galvanized corners are sealed, and gypsum board as the inner core layer. Manufactured through processes such as heating, pressing, and curing.

## 100mm Metal Cleanroom Panel Handmade, Gypsum board



### Physical Parameters

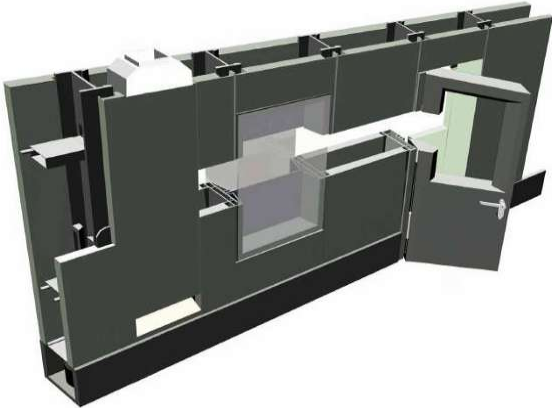
Total Thickness	100mm
Standard Size	960mm,1160mm, Other size customizable
Tolerance	≤1mm
Max. Length	≤10000mm
Coating	PE, PVDF, Antistatic, Stainless steel HDP and PVC coating etc.
Sheet Thickness	0.5mm, 0.6mm, 0.7mm, 0.8mm, 1.0mm
Insulation material	Double 12mm gypsum board
Panel Frame	1.0mm
Corner Connection	1.0mm, galvanized steel
Protection Film	0.06mm, customizable if t>0.06mm
Connection Type	Aluminum joint type

# LL-CRSW-76/100 series

## Structure Type

76mm/100mm metal surface detachable wall, using special shrapnel edge gypsum board, with adjustable ground rail, H-shaped vertical keel, reinforced horizontal keel, elastic buckle and other accessories assembled, 100mm thick wall can be built with air return unit. Each panel can be removable.

## 100mm Clip Cleanroom Panel Handmade, Gypsum board



### Physical Parameters

Total Thickness	76mm/100mm
Standard Size	960mm,1160mm,Other size customizable
Diagonal Tolerance	≤1mm
Max. Length of vertical keel	20000mm
Coating	PE, PVDF, Antistatic, Stainless steel HDP and PVC coating etc.
Sheet Thickness	0.5mm, 0.6mm, 0.7mm, 0.8mm, 1.0mm
Insulation material	12mm gypsum board (fireproof 4H interior needs to be filled with rock wool)
Panel Frame	1.2mm
Protection Film	0.06mm, customizable if t>0.06mm
Fire Resistance	1.0h/4.0h
Connection Type	Keel construction, spring buckle



# LL-CRDW series

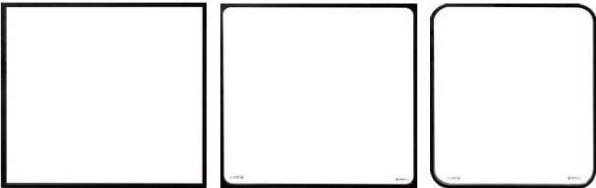
Cleanroom window

## Structure Type

Unique performance in sealing.  
Flush with wall. Injected with Nitrogen gas.  
Flexible installation.  
S.S inner frame beautiful appearance. Customizable thickness.

## Double-layer tempered glass cleanroom window

Available Corner Type



Rectangular Corner      Rectangular and Round Corner      Round Corner

## Parameters

Thickness	50mm / 75mm / 100mm (Other size available)
Frame Color	Black/ White
Glass Thickness	5mm/ 6mm/ 8mm
Corner Type	Rectangular, Rectangular and Round, Round, (S.S inside)
Glass Performance	Tempered glass/ Fireproof glass
Sealing Performance	Four-side sealing, built-in desiccant, filled with N2 gas



# LL-CRSD series

Cleanroom door

## Structure Features

Galvanized steel plate bending and pressing together.  
Three sides sealing with self styrofoam tape.  
Automatic drop seal.  
European quality  
Customizable.

## Steel Door







## Parameters




Standard size	900*2100/1300*2100/1500*2100 (Door size customizable)
Door Frame Structure	Flat type / Clamp type (Door frame size customizable)
Door Frame	1.5mm Galvanized steel
Door Leaf	1.0/1.2mm Galvanized steel
Door leaf thickness	50mm
Insulation Material	Paper honeycomb/ Alu. honeycomb / Rockwool
Window on the door	Double layered with square or round corner Window Size: 500*800mm, customizable; Window Color: Black or White ; Glass: T=5mm tempered glass (can be fireproof); N2 gas and desiccant inside
Door Hardware	Lock: Split lock, Non-split lock, Press lock, Push bar lock etc. Hinge: SS304 lift-off type Door closer: Regular or Concealed (with or without positioner) Interlock: Electromagnetic type or electric bolt type
Door Seal	Automatic drop seal
Coating	Electrostatic spraying (color card available for choosing)

# Door Hardware Selection

### Locks






Split lock      Integral lock      Press lock      Push bar





Push plate      Press-down bar      Push plate & Pull handle

### Door Closer






Regular      Concealed      Slide






Door sequencer      Automatic door closer

### Hinges



S.S. hinges      Hidden hinges      Automatic drop seal

### Interlocks



Electric bolt type      Electromagnetic type      Stainless steel concealed latch

# Steel Door Color Selection

Note: Due to different processing batches, the color of the Color selection is slightly different from the actual color.

			
001 Matt white gray	002 Ivory	003 Medium gray	021 Snow white
			
005 Matt blue	023 Baosteel sea blue	007 Matt Sea blue	008 Sea blue sand pattern
			
009 Peacock blue	010 Lake Blue	011 Antistatic black	012 Emerald green
			
013 Bright red	014 Light pink	015 Orange	016 Brown
			
017 Pale blue	018 Light yellow	019 Bean green	022 Bright blue

Other Colors In RAL Is Also Available

LINE - LINK  
CLEANROOM TOTAL SOLUTION  
LINSSEN GROUP

FOCUS ON CLEANROOM TECHNOLOGY  
TO BUILD INTERNATIONAL BRANDS

LINE-LINK  
CERTIFICATE

# HONOR CERTIFICATE



18 Patents



High-tech Enterprise Certificate



CE Certificate for HEPA Filter



Material Certificate



16 Inspection Reports



Safety Production Standardization Certificate



Fire Resistance Certificate for Door



Fire Resistance Certificate for Panel



Fire Resistance Certificate for Window



Quality Management Certificate



Measurement Confirmation Certificate



Suzhou Famous Brand Product Certificate



Technology Enterprise Certificate



Quality Management System Certificate



Occupational Health and Safety Management System Certificate



Environmental Management System Certificate



Quality Management Certificate



Top 10 Growing Companies



Three A Credit Rating



## Clean Room Project Photo Reference



We Optimize Your Operating Facility  
With Innovative Engineering Solution





## Project Site Photos - Cleanroom 10k Expansion Project





## Project Site Photos - Cleanroom 10k Expansion Project





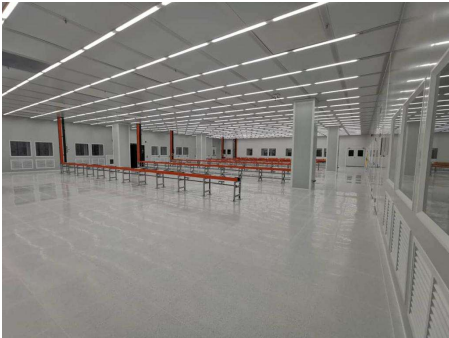


## Project Site Photos - Cleanroom 10k Expansion Project





## Project Site Photos - Cleanroom 10k Expansion Project







## Project Site Photos - Cleanroom 10k Expansion Project





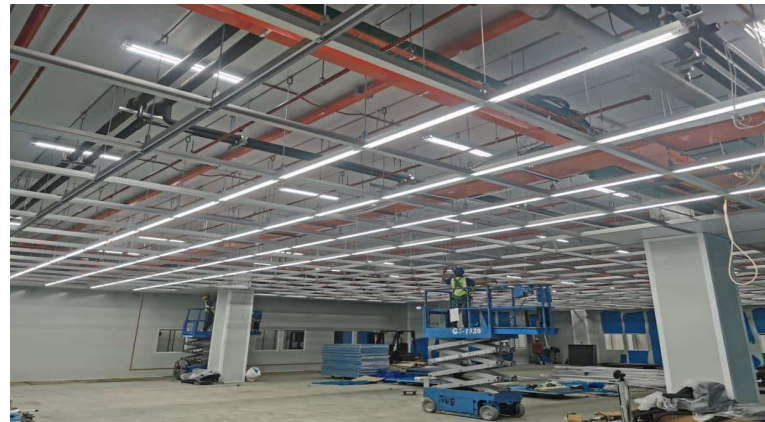
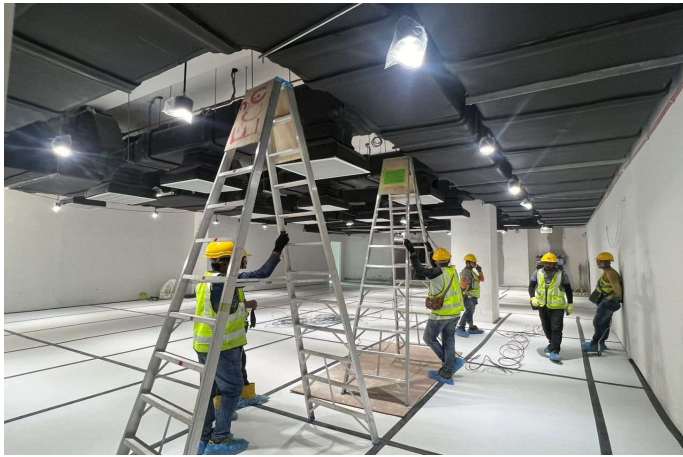
## Project Site Photos







## Project Site Photos



# MAIN CUSTOMERS





LINE - LINK  
CLEANROOM TOTAL SOLUTION  
LINSIN GROUP

FOCUS ON CLEANROOM TECHNOLOGY  
TO BUILD INTERNATIONAL BRANDS

LINE-LINK  
PROJECT

## PROJECT REFERENCE

Partial clients list only and no preference ranking



20 years of experience, MayAir emerged as recognized brand by Global 500 companies and recognized enterprises worldwide.










# **AFTER-SALES SERVICE**

## Our Service Commitment

- ✓ BSE's commitment doesn't end when the machine starts running.
- ✓ We ensure your production line keeps performing at its best — safely, efficiently, and reliably.
- ✓ Our after-sales services are designed to minimize downtime and maximize productivity.

## Scope of After-Sales Support

-  Installation & Commissioning Support – On-site technical assistance and fine-tuning.
-  Preventive Maintenance – Scheduled inspections to prevent unexpected breakdowns.
-  System Calibration & Testing – Ensuring precision and performance after deployment.
-  On-call Technical Assistance – Hotline and remote troubleshooting support.
-  Training for Operators & Engineers – Hands-on guidance to help your team run systems confidently.





## Maintenance Programs

**Standard Plan:** Basic preventive maintenance and hotline support

**Premium Plan:** Priority response, spare parts coverage, and scheduled on-site visits

**Customized Plan:** Tailored maintenance according to production load and system complexity

**Note:** All plans include regular performance reports and improvement recommendations

## Spare Parts & Upgrades

→ Original spare parts for long-term reliability

→ Fast response from our Vietnam and Malaysia service hubs

→ Upgrade options for system expansion or new production requirements

## Customer Value

- ✓ Reduce downtime and increase machine lifespan
- ✓ Ensure consistent product quality and productivity
- ✓ Gain peace of mind with dedicated local service teams
- ✓ Build a long-term partnership based on trust and support





# **7 CONTACT US**

[www.bse-tech.com](http://www.bse-tech.com)

# REACH OUT

## VIETNAM OFFICE

Level 12 Block A2,  
Viettel Building No. 28.285 CMT8,  
District 10, Ho Chi Minh City,  
Vietnam



## EMAIL ADDRESS

Office - [phuong@bse-tech.com](mailto:phuong@bse-tech.com)



## PHONE NUMBER

Office : (+84)2866521399



## MALAYSIA OFFICE

No. 33 & 33A,  
Jalan Pusat Perniagaan Raja Uda 4,  
Pusat Perniagaan Raja Uda,  
12300 Butterworth,  
Pulau Pinang, Malaysia.

## EMAIL ADDRESS

Office - [sales@bse-tech.com](mailto:sales@bse-tech.com)  
Mr. Teh - [ghteh@bse-tech.com](mailto:ghteh@bse-tech.com)

## PHONE NUMBER

Office - (604) 314 0868  
Fax - (604) 314 0628  
Mobile : - (+6012-3204868)



Thank  
you